

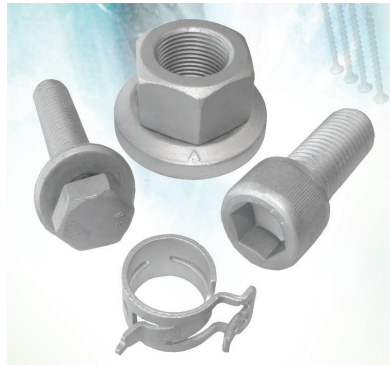
## MAGNI 565

Magni 565 is a chrome free duplex fastener coating system that combines an inorganic zinc-rich basecoat with an aluminum-rich organic topcoat. Magni 565 has been formulated as a two-coat system, providing a cost advantage while maintaining superior corrosion resistance. Friction modifiers are integrated into the Magni 565 topcoat, providing repeatable torque tension characteristics during assembly.

Magni 565 is designed for use on externally threaded fasteners, stampings and other types of hardware.

This product can be applied via dip-spin or spray and is available in a variety of colors.

Magni 565 is currently the preferred finish on fasteners at many automotive manufacturers.



### Performance Data:

Salt Spray 480-1000 Hours

ASTM B117

Cyclic Corrosion Resistance

GM9540P 60 cycles

SAEJ2334 120 cycles

Volvo VCS 1027,149 tbd

Coefficient of Friction 0.13 (other levels available)

Coefficient of Friction Tested per DIN 946 +.03

Coating Thickness 13 microns

No Hydrogen Embrittlement Concerns

Excellent Bi-Metallic Corrosion Resistance

Heat Resistance 250o F (long term)

500o F (short term)

Resistant to Automotive Fuels and Fluids

Paintable

RoHS, WEE, and ELV Compliant

Salt Spray 240 Hours (ASTM B117)

Coating Thickness 50 microns

Information presented in this data sheet is considered reliable, but conditions and methods of use, which are beyond our control, may modify results. Before these product are used, the user should confirm their suitability.

We cannot accept liability for any loss, injury or damage which may result from its use.

We do not warrant the accuracy or completeness of any such information whether orally or in writing.

We reserve the right at anytime and without notice to update or improve products and processes and our information concerning the same.

This document may contain confidential and privileged information. Copyright 2007 ©

All rights reserved.  THE MAGNI GROUP, INC.™

### Specifications:

Arvin Meritor P91

Bobcat PS-106A

BMW GS90010

Briggs & Stratton

Brose BN590295-106

Case New Holland MAT0320, Type 1, Class A

Chrysler PS-5873 (ref: PS-10633 non-threaded)

PS-10633, PS-10378

Daimler-Benz DBL 8440

Delphi DX551801, DX45501804

DX551810, DX44501804

Fiat 9.57513/Tipo IV

Ford S439 (WSS-M21P37-A1)

General Motors GM7114M, GMW3359

Int'l Truck TMS-4518, Type I

ISO 10683

JLG 4150701

John Deere JDM F13

Land Rover LRES.21.ZS.05

Nissan M4601

Porsche PTL 7529

PSA B15 3320

Renault Trucks 01.71.4002/H

Tacom/US Army 12469117

Toro

Trane S 3201063A1

TRW TS 2-25-60, Class A

Volkswagen TL 233

Volvo VCS5737.29, .19

## Coatings available from WEPLtd

Wood Lane, Fordhouses, Wolverhampton WV10 8HN

tel: 01902 397333 fax: 01902 785372

enquiries@anochrome-group.co.uk

www.anochrome.co.uk